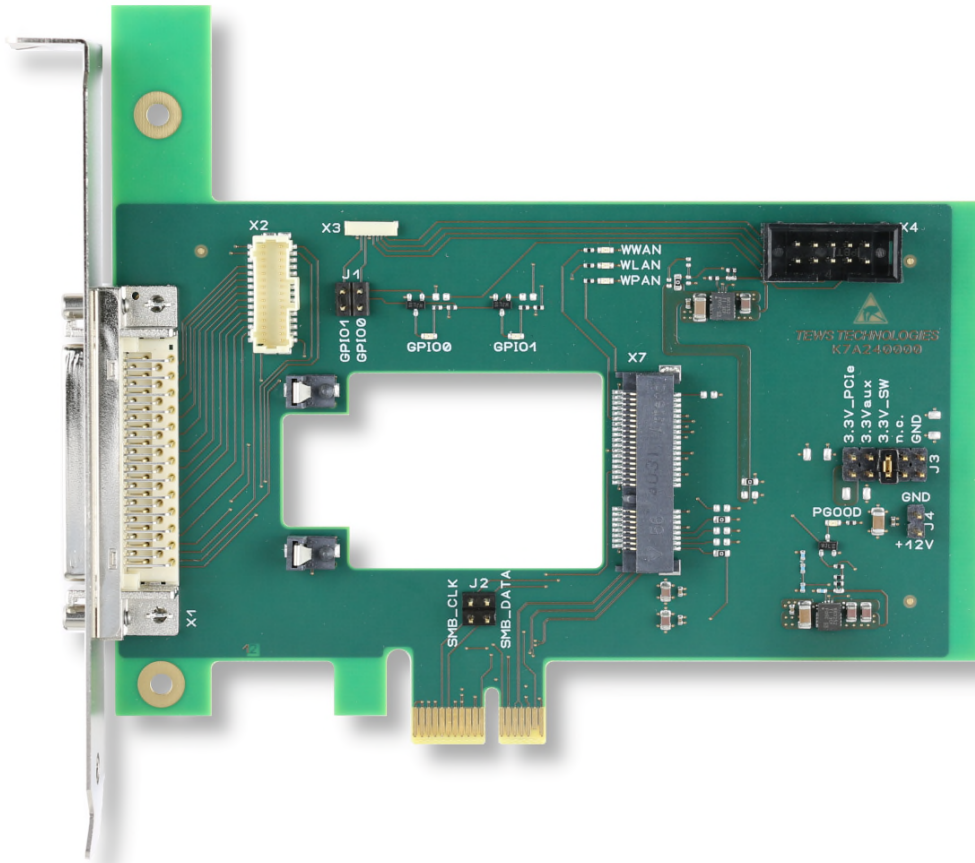


TPCE240 PCI Express Carrier Board for one PCIe Mini Cards



TPCE240-10R

Application Information

The TPCE240 is a PCI Express Revision 2.0 compatible carrier board for one PCIe Mini Card. While specifically designed to run, test and maintain TEWS Mini PCI Express modules, it is an ideal solution for prototyping, but it can also be used to build modular, flexible and cost effective I/O solutions for all kinds of applications like process control, medical systems, telecommunication and traffic control.

Prototyping is facilitated by a couple of features: Clip latches allow to easily change the board without screws, a PCB cutout allows access to the PCIe Mini Cards from both sides, and a 12 V fan supply is provided for power demanding applications (if integrated on the mounted module). The supply source for the PCIe Mini Cards is

selectable with a jumper setting (3.3 V PCIe, 3.3 V AUX or 12 V). The PCIe Mini Cards WxAN signals are connected to onboard LEDs.

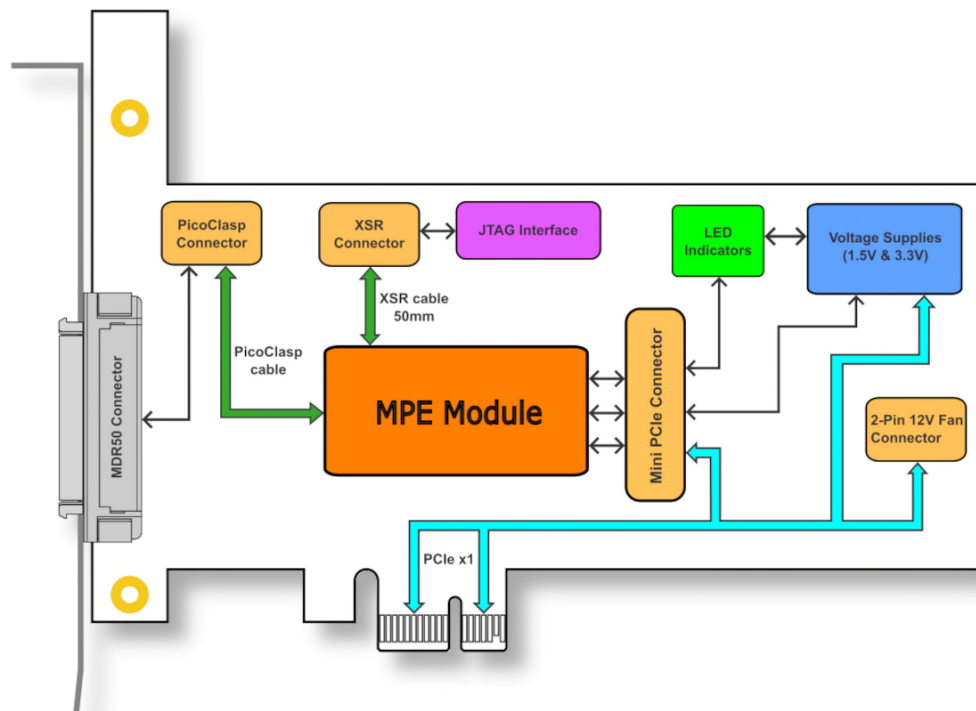
A TEWS TA308 is partially integrated with providing the possible connection to an onboard JTAG Interface via XSR cable (XSR cable not included).

The TPCE240 also provides an option to adapt the PicoClasp connection usually used on TEWS PCIe Mini Cards to a MDR50 connector in the bracket (PicoClasp cable not included).

The Embedded I/O Company

Technical Information

- Form Factor: PCI Express x1, Revision 2.0
 - Board size: Half-Length, 111.10 mm x 130.6 mm
- One PCI Express Mini Card Slot
 - PCIe Interface: x1, Rev 2.0
 - Selectable PCIe Mini Card Supply
 - Provides 1.5 V Supply
- On-Board WxAN LEDs
- Options for TEWS mPCIe Cards: PicoClasp connector to route the PCIe Mini Card I/O signals to a MDR50 connector in the front panel and an onboard JTAG Interface via XSR cable
- Operating temperature -40 °C to +85 °C



Block Diagram

Order Information

RoHS Compliant

TPCE240-10R PCI Express x1 Revision 2.0 compatible carrier board for one PCIe Mini Card

For the availability of non-RoHS compliant (lead solder) products please contact TEWS.

Related Products

TA314 Cable Kit for Modules with 50-pin MDR type Connector

Documentation

TPCE240-DOC User Manual